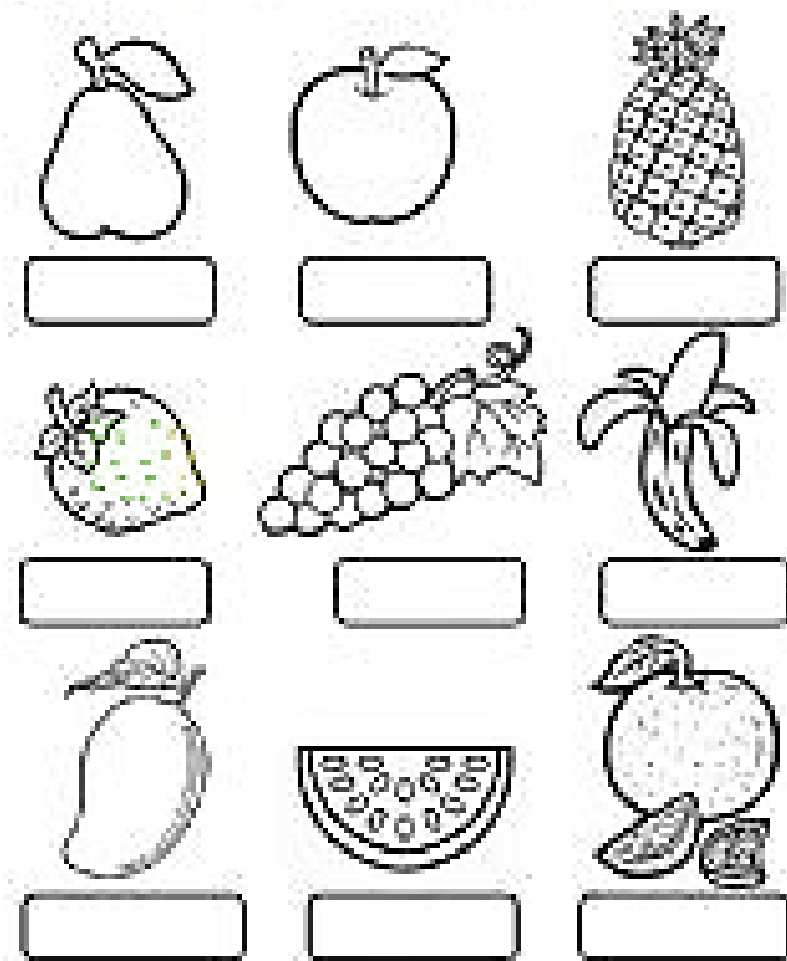


# The Fruit

## What is a Fruit?

- i. A fruit is a fully developed \_\_\_\_\_.
- ii. The part of the plant that grows into a fruit is called a \_\_\_\_\_.

Examples of Fruits: Name and colour the fruits below.

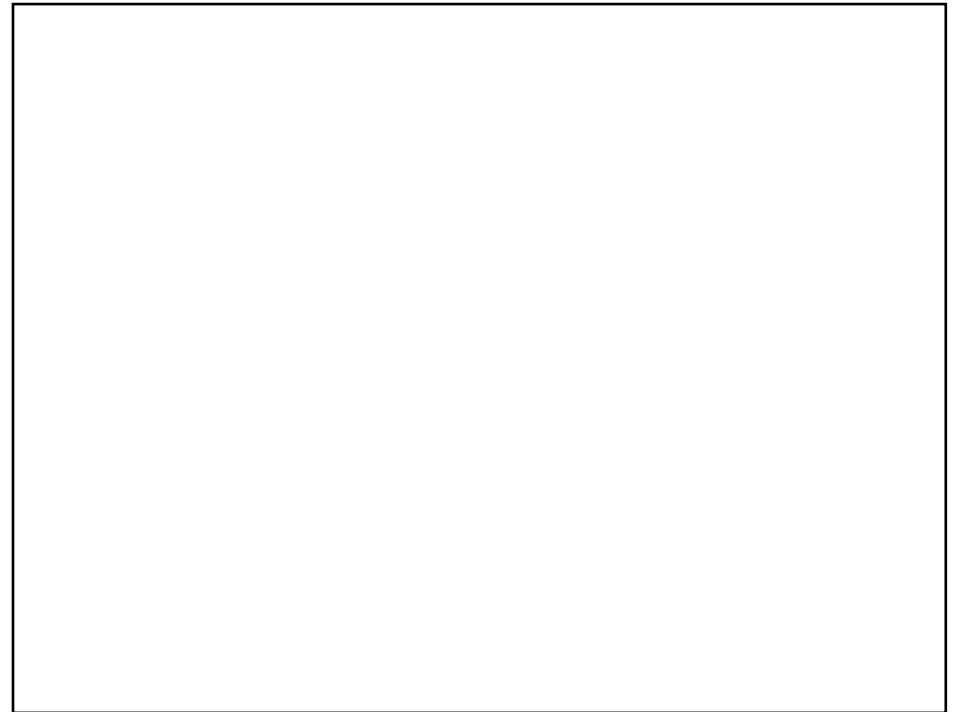


## Parts of a fruit

A fruit has four main parts. Namely:

- i. Epicarp or Exocarp – is the skin of the fruit.
- ii. Mesocarp – is the flesh of the fruit.
- iii. Endocarp – is the hard covering surrounding the seed in a fruit.
- iv. Seed – is a fully developed ovule.

Draw a fruit and label the four main parts mentioned above.



### Types of Fruits

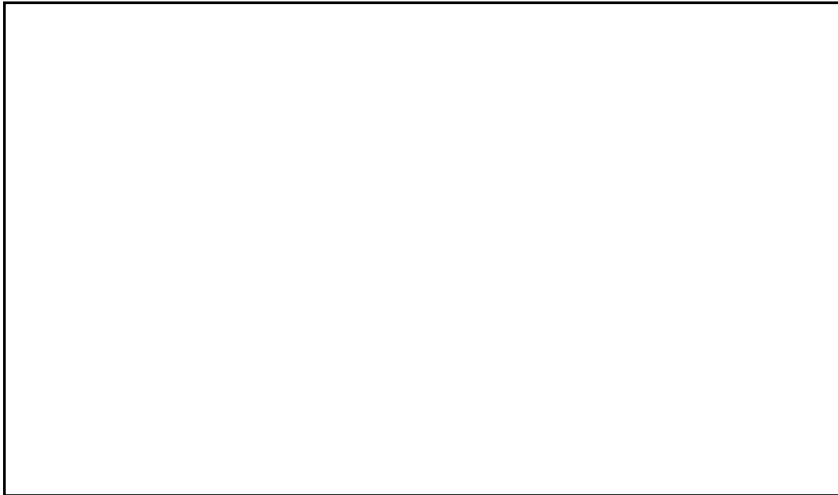
The four main types of fruits are:

- i. Dry indehiscent fruit
- ii. Dry dehiscent fruit
- iii. False fruits
- iv. Fleshy fruits

### False Fruits

False fruits are formed from the receptacle of a flower and not from the ovary. Their seeds are found on the outside of the fruit.

*Draw, color and name an example of a false fruit.*



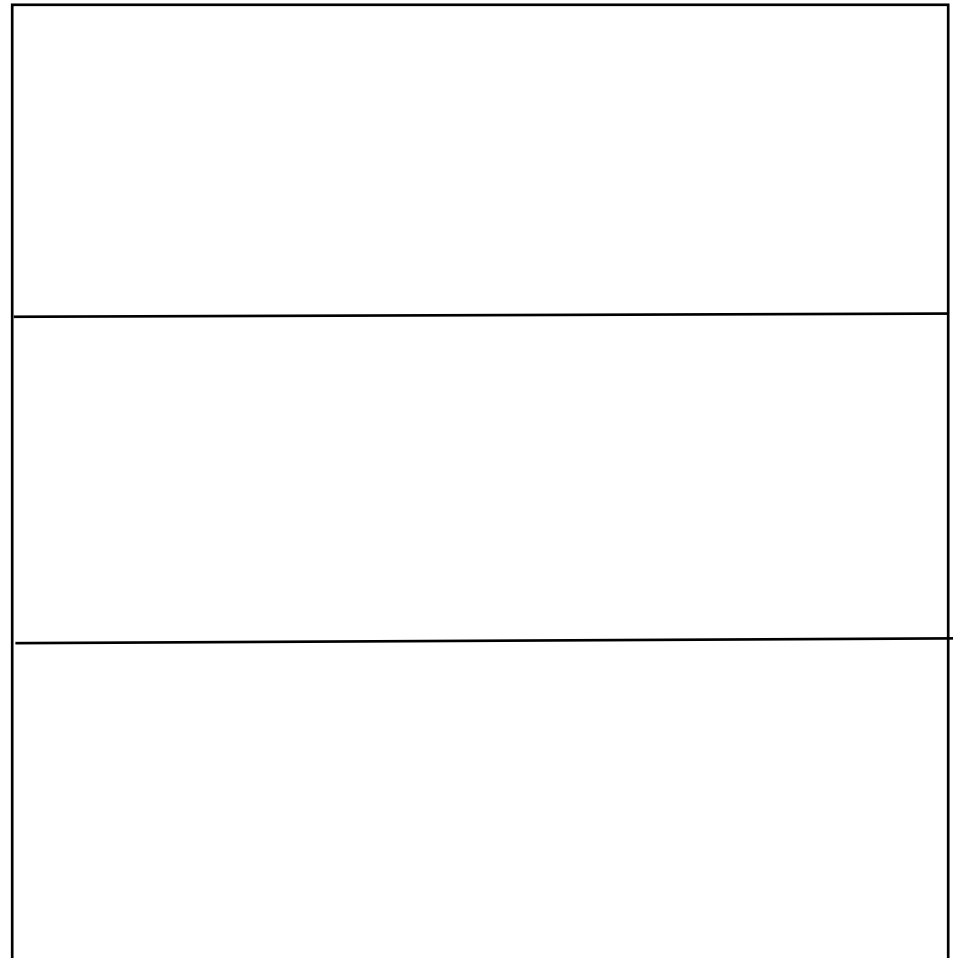
### Fleshy Fruits

Fleshy fruits are juicy fruits.

There are three types of fleshy fruits. Namely:

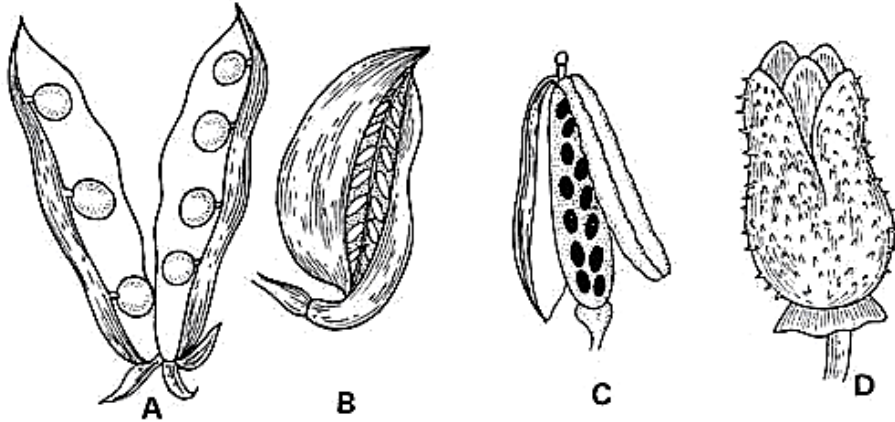
- i. Drupe – has one big seed in the middle of the fruit.
- ii. Berry – has a soft epicarp and has many seeds.
- iii. Hesperidium – has a tough and highly scented epicarp.

**Draw, color and name one example for each type of fleshy fruit.**



### Dry Dehiscent Fruit

These fruits split at the time of maturity.



**A** – Legume: these fruits split on two sides

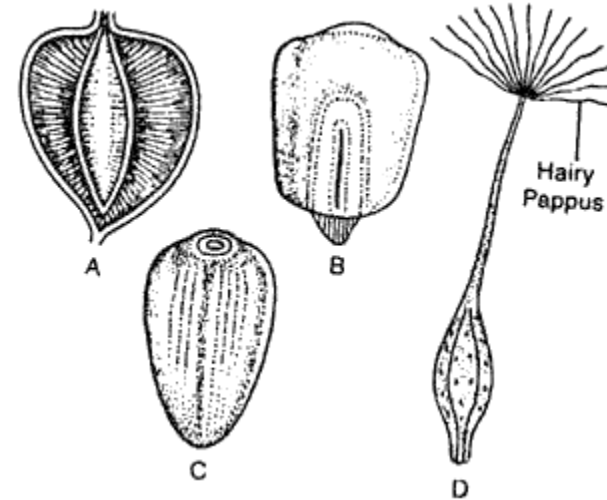
**B** – Follicle: these fruits split on one side

**C** – Capsule: these fruits split on three or more sides

**D** – Schizocarp: these fruits split on many single fruits

### Dry Indehiscent Fruit

These fruits do not split at time of maturity.



**A** – Achene: the testa of the seed and the epicarp of the fruit are not joined together. E.g. Sunflower and carrot.

**B** – Caryopsis: the testa of the seed and the epicarp of the fruit are joined together. E.g. Paddy and corn.

**C** – Nut: has a shell for its skin.

**D** – Cypsela: bears hairs to disperse seeds.

### **NB:**

1. Paste this handout in your exercise book. Submit this on April, 20<sup>th</sup>, 2020.
2. Please be reminded that all outstanding exercises/homework/assignments are due immediately on the first day of school (April, 20<sup>th</sup>, 2020).
3. Do stay safe at home.