

Form 1

Integrated Science

Revision Questions

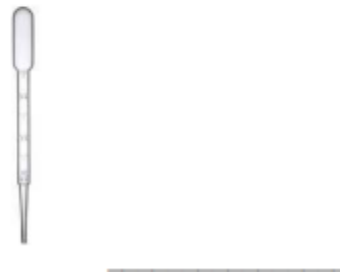
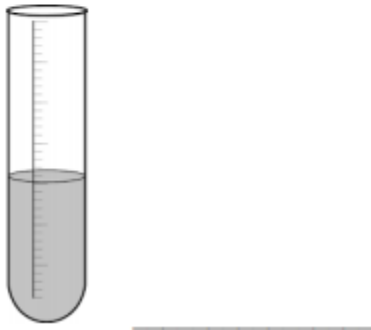
Due date: 20th April, 2020

Instructions:

Rewrite all questions and answer them in your exercise books.

1. Re- draw these apparatus in your books and choose their correct names from the box below.

test tube spatula pipette beaker funnel







2. Underline the correct answer:

- a. A plant is a (living / non-living) thing.
- b. A mouse (has a backbone / does not have a backbone).
- c. A snake is a (reptile / mammal).

3. These are some measuring instruments. Match (by joining the dots) the one you would use to:

measure 50cm string ●	measure the mass of a block ●	measure the temperature of water ●
--------------------------	----------------------------------	---------------------------------------

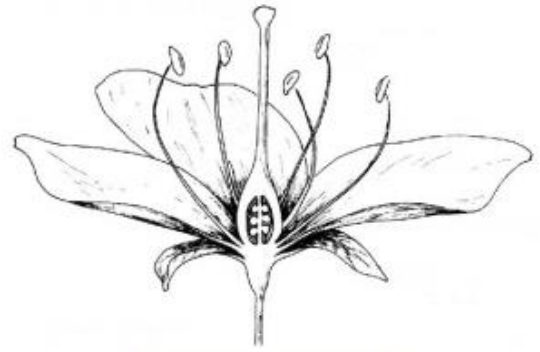
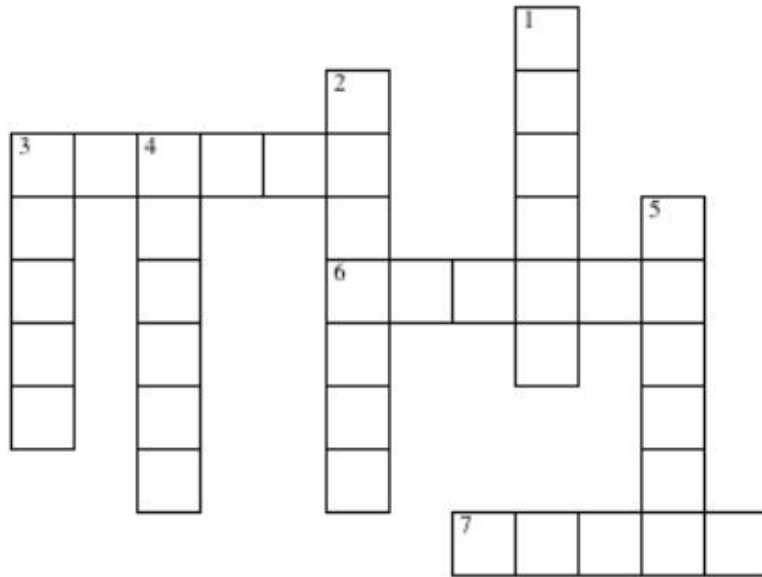
●  stopwatch	●  thermometer	●  balance	●  ruler
--	---	--	--

4. The pictures below shows a food chain. *(There is no need to draw the diagram below, you can just write the food chain instead.)*



- a. What does the snail eat? _____
- b. Is the snail a herbivore or a carnivore? _____
- c. Give the name of a place where you might find a snail and a hedgehog. _____

5. Parts of a Flower Complete the crossword puzzle using what you know about the subject. Refer to the word bank if you need help.



Word Bank

pistil
 stamen
 ovary
 sepals
 stigma
 anther
 blossom
 petal

Across

- 3. Pollen travels through this tube
- 6. Provides support for the pollen maker
- 7. Contains the egg cells

Down

- 1. Traps pollen
- 2. Reproductive structure found on many plants called a flower or this
- 3. Attracts insects and birds
- 4. Protected the flower bud before it opened
- 5. Makes pollen

6. Fill in the blank spaces using the words from the box below.

Light	Water	Plant
Healthy	Carbon dioxide	Soil
Nutrients	Spindly	Light
Conditions		

Plants can only grow under certain _____. They need _____, air and warmth. If a _____ does not have these things it will slowly die. A _____ plant has green leaves and stands up strongly. A plant that has been deprived of _____ will lose its leaves. A plant that has been deprived of _____ will turn yellow, thin and _____. To stay healthy a plant needs to take water and nutrients from the _____. A plant takes _____ from the air and uses it with water and _____ to create food.

7. Fill in the blank spaces using the words from the box below.

Sharp	Lab coat	Googles	Clean
Spill	Wash	Instructions	Taste

- Always _____ your hands before and after an experiment.
- Read all _____ before beginning the experiment and ask questions if you are unsure of directions.
- Keep your work area neat and _____.
- Always wear _____ when working with chemicals or substances that may hurt your eyes.
- Never touch, _____, or smell any chemicals in the lab.
- Be careful not to _____ any chemicals. If a spill does occur, clean it up immediately.
- Wear a _____ to protect yourself from chemicals.
- Have an adult handle _____ objects such as knives or blades.

8. Place the letter that correct identifies the organelle in the space to the left.

- | | | |
|-------|--|---------------------------------|
| _____ | 1. area that stores and packages chemicals. | a. cell (plasma) membrane |
| _____ | 2. bubble-like storage vessel. | b. cytoplasm |
| _____ | 3. control center of the cell. | c. smooth endoplasmic reticulum |
| _____ | 4. stores chlorophyll; used in photosynthesis. | d. rough endoplasmic reticulum |
| _____ | 5. releases energy from nutrients. | e. golgi bodies |
| _____ | 6. internal transport system <u>with</u> ribosomes attached. | f. nucleus |
| _____ | 7. jelly-like materials between the nucleus and cell membrane. | g. nucleolus |
| _____ | 8. only found in animal cells; used during cell division. | h. cell wall |
| _____ | 9. membrane surrounding nucleus and organelles. | i. chloroplast |
| _____ | 10. internal transport system <u>without</u> ribosomes attached. | j. vacuoles |
| _____ | 11. located within nucleus. | k. mitochondria |
| _____ | 12. stiff outer covering of a plant cell. | l. ribosome |
| _____ | 13. site of protein synthesis. | m. centrioles |